

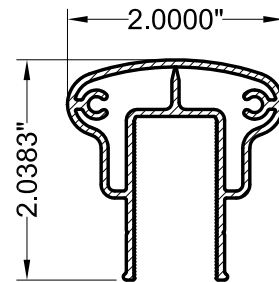
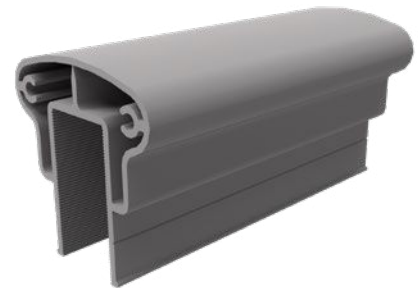


# DesignRail® Graspable Top Rail (Series 150)

Series 150 is a 2" wide top rail for with easy-to-grasp design for DesignRail®. Code-compliant for residential stairs.

## FEATURES & BENEFITS

- Powder-coated aluminum, compatible with wood grain colors
- Installed between posts (using Rail Connecting Brackets) creating a newel post style
- Top rail can be ordered in 10-ft or 20-ft lengths
- Splice plates may be used to connect segments of top rail
- For use on level and stair railings
- **Meets residential code requirements** for stair hand rail sizing; requires a hand rail when used on stairs in commercial settings



FEENEY IS A MEMBER OF:



NOMMA



NAA  
NATIONAL APARTMENT ASSOCIATION



Leading Suppliers Council



NADRA