

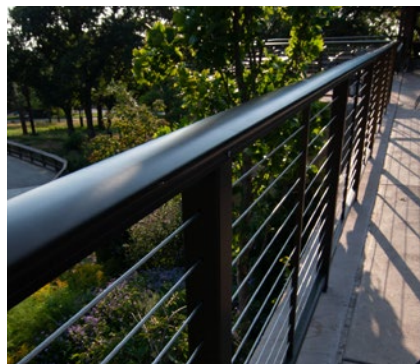
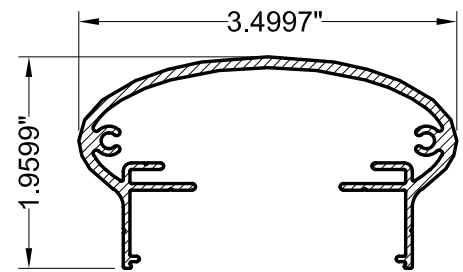
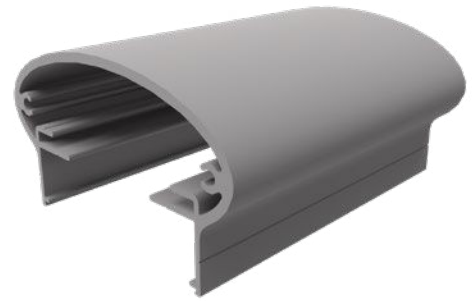


DesignRail® Elliptical Top Rail (Series 350)

Series 350 is a 3-1/2" elliptical top rail for DesignRail®. The sleek, stylish design offers another option for those who prefer a less angular top rail appearance.

FEATURES & BENEFITS

- Powder-coated aluminum
- Top rails rest on the tops of the posts, secured with stainless steel screws.
- For use on level and stair railings - **requires a handrail** when used on stairs
- Top rail can be ordered in 10-ft or 20-ft lengths - splice plates may be used to connect segments of top rail



FEENEY IS A MEMBER OF:

