

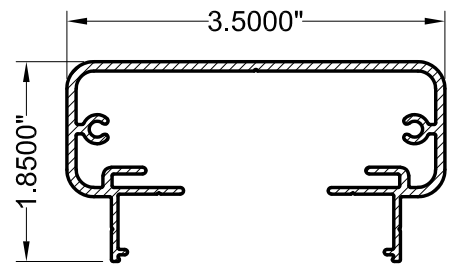
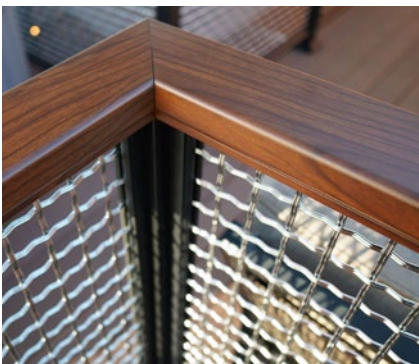
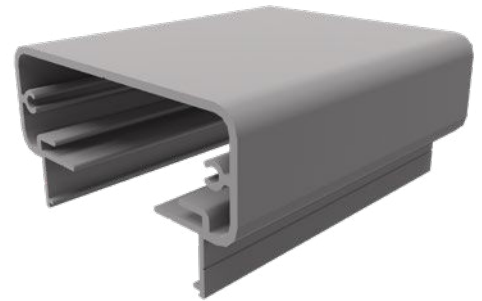


# DesignRail® Rectangular Top Rail (Series 200)

Series 200 is a 3-1/2" wide, rectangular top rail for DesignRail®. The flat surface is a convenient perch for your favorite beverage as you enjoy the view.

## FEATURES & BENEFITS

- Powder-coated aluminum, compatible with wood grain colors
- Top rails rest on the tops of the posts, secured with stainless steel screws.
- For use on level and stair railings - **requires a handrail** when used on stairs
- Top rail can be ordered in 10-ft or 20-ft lengths - splice plates may be used to connect segments of top rail



FEENEY IS A MEMBER OF:



NOMMA



NAA  
NATIONAL APARTMENT ASSOCIATION



Member  
NAHB  
National Association of Home Builders

Leading Suppliers Council



NADRA  
NATIONAL ASSOCIATION OF DESIGN RAIL MANUFACTURERS