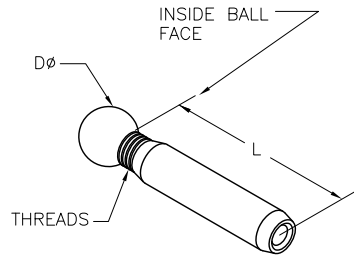


ITEM: FIXED BALL END  
 MATERIAL: TYPE 316 STAINLESS STEEL.  
 FITTING TYPE: NON-ADJUSTABLE CABLE END FITTING  
 SWAGE TYPE: MACHINE HEX SWAGE AT FACTORY (1/8" & 3/16" SIZES ALSO AVAILABLE IN CABLECRIMP HAND SWAGE STYLE FOR ATTACHING IN THE FIELD).  
 POST TYPE: METAL. WOOD POSSIBLE BUT NOT RECOMMENDED. (POSTS NOT INCLUDED).  
 FASTENING TO POST: ATTACH THROUGH END/TERMINATION POST HOLES USING A SCREW-ON BALL END.  
 FASTENING AT ANGLES: DRILL SLOTS OR ANGLED POST HOLES AND FITTING WILL PIVOT ON BALL END.  
 CABLE TENSIONING: NON-ADJUSTABLE FIXED END.  
 HARDWARE PAIRINGS: USUALLY PAIRED WITH A BALL END TURNBUCKLE. MUST BE PAIRED WITH A TENSION ADJUSTMENT FITTING, NOT ANOTHER FIXED END.  
 SUPPLIER: FEENEY ARCHITECTURAL PRODUCTS



FIXED BALL END, STAINLESS STEEL

PART#	SWAGE TYPE	CABLE SIZE	THREAD SIZE	BALL END DIA (Dø)	LENGTH (L)	*ATTACHMENT POST DRILL HOLE ø
3352	MACHINE	1/8"	1/4-28RH	5/8"	1-1/4"	5/16"
3353	MACHINE	3/16"	1/4-28RH	5/8"	1-3/4"	3/8"
3354	MACHINE	1/4"	5/16-24RH	5/8"	2"	7/16"
3355	CABLECRIMP	1/8"	1/4-28RH	5/8"	1-7/8"	5/16"
3356	CABLECRIMP	3/16"	1/4-28RH	5/8"	2-1/4"	3/8"

\* IF DESIRED THE BALL END CAN BE SLIGHTLY RECESSED INTO THE POST BY COUNTERBORING WITH A 9/16" DRILL

CableRail Reference Drawing:  
**FIXED BALL END**

THIS DRAWING IS THE PROPERTY OF FEENEY INC. ANY REPRODUCTION OF THIS DOCUMENT WITHOUT THE EXPRESSED WRITTEN CONSENT OF FEENEY INC. IS STRICTLY PROHIBITED.

DATE:	05/15/13
PAGE:	1 of 1
REV:	
BY:	DSY
CHK:	BWA

**feeney**  
*makes it easy*  
 2603 Union St., Oakland, CA 94607  
 P: 800-888-2418 F: 510-893-9484  
 www.feeneyinc.com