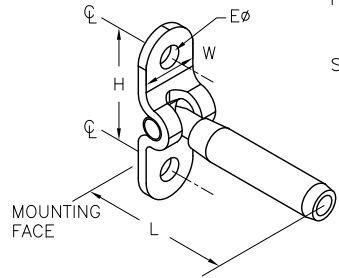


ITEM: FIXED SURFACE MOUNT  
 MATERIAL: TYPE 316 STAINLESS STEEL.  
 FITTING TYPE: NON-ADJUSTABLE CABLE END FITTING  
 SWAGE TYPE: MACHINE HEX SWAGE AT FACTORY (1/8" & 3/16" SIZES ALSO AVAILABLE IN CABLECRIMP HAND SWAGE STYLE FOR FIELD FABRICATION)  
 POST TYPE: WOOD. METAL POSSIBLE BUT NOT RECOMMENDED. (POSTS NOT INCLUDED).  
 FASTENING TO POST: ATTACH TO FACE OF END/TERMINATION POST OR WALL USING TWO SCREWS OR BOLTS.  
 FASTENING AT ANGLES: MOUNTING FLANGE PIVOTS UP TO 130 DEGREES.  
 CABLE TENSIONING: NON-ADJUSTABLE FIXED END.  
 HARDWARE PAIRINGS: USUALLY PAIRED WITH SURFACE MOUNT TURNBUCKLE. MUST ONLY BE PAIRED WITH A TENSION ADJUSTMENT FITTING (NOT ANOTHER FIXED END).



SUPPLIER:  
 FEENEY WIRE ROPE & RIGGING  
 2603 UNION STREET, OAKLAND, CA 94607  
 PH: 1-800/888-2418  
 FAX: 1-510/893-9484  
 E-MAIL: [sales@feeneywire.com](mailto:sales@feeneywire.com)  
 WEB: [www.cablerail.com](http://www.cablerail.com)

FIXED SURFACE MOUNT, STAINLESS STEEL

| PART# | MODEL#      | SWAGE TYPE | CABLE SIZE | HOLE DIA. (Eφ) | HOLE SPAN (H)† | FLANGE WIDTH (W) | LENGTH (L) | ATTACHMENT POST DRILL HOLE φ |
|-------|-------------|------------|------------|----------------|----------------|------------------|------------|------------------------------|
| 3281  | 125-FSM-T   | MACHINE    | 1/8"       | 1/4"           | 1-3/8"         | 5/8"             | 2-1/8"     | LAG OR TAP                   |
| 3284  | 187-FSM-T   | MACHINE    | 3/16"      | 1/4"           | 1-3/8"         | 5/8"             | 2-1/4"     | LAG OR TAP                   |
| 3337  | 250-FSM-T   | MACHINE    | 1/4"       | 5/16"          | 1-1/2"         | 3/4"             | 3-1/4"     | LAG OR TAP                   |
| *3333 | CC125-FSM-T | CABLECRIMP | 1/8"       | 1/4"           | 1-3/8"         | 5/8"             | 3"         | LAG OR TAP                   |
| 3334  | CC187-FSM-T | CABLECRIMP | 3/16"      | 1/4"           | 1-3/8"         | 5/8"             | 3"         | LAG OR TAP                   |

\* 3333 IS SAME AS A #3334 BUT INCLUDES A CONVERSION INSERT SLEEVE FOR CRIMPING ONTO 1/8" CABLE  
 † SINCE FLANGES ARE FORMED PIECES, ALLOW A TOLERANCE OF ±1/16" ON FLANGE HOLE SPAN DIMENSION (H).

CableRail Reference Drawing:  
**FIXED SURFACE MOUNT**

THIS DRAWING IS THE PROPERTY OF FEENEY INC. ANY REPRODUCTION OF THIS DOCUMENT WITHOUT THE EXPRESSED WRITTEN CONSENT OF FEENEY INC. IS STRICTLY PROHIBITED.

|       |          |
|-------|----------|
| DATE: | 05/15/13 |
| PAGE: | 1 of 1   |
| REV:  |          |
| BY:   | DSY      |
| CHK:  | BWA      |

**feeney**  
*makes it easy*  
 2603 Union St., Oakland, CA 94607  
 P: 800-888-2418 F: 510-893-9484  
[www.feeneyinc.com](http://www.feeneyinc.com)