

ITEM: SLEEKLINE CAP END TURNBUCKLE

MATERIAL: TYPE 316 STAINLESS STEEL.

FITTING TYPE: ADJUSTABLE CABLE END TURNBUCKLE FOR ATTACHING & TENSIONING LINES. SMOOTH, ATTRACTIVE APPEARANCE WITHOUT ANY EXPOSED THREADS OR SWAGE ENDS.

SWAGE TYPE: CAN BE MACHINE SWAGED IN FACTORY BUT BEST SUITED FOR FIELD ATTACHMENT USING CABLECRIMP HAND SWAGE STYLE.

POST TYPE: METAL. WOOD POSSIBLE BUT NOT RECOMMENDED. (POSTS NOT INCLUDED).

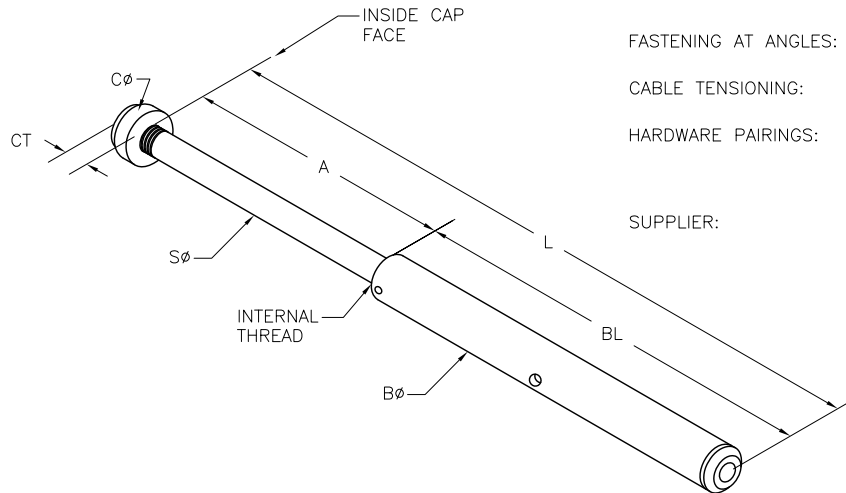
FASTENING TO POST: ATTACH THROUGH END/TERMINATION POST HOLES USING A SMALL END CAP.

FASTENING AT ANGLES: DRILL POST HOLES AT ANGLE AND USE BEVELED WASHERS

CABLE TENSIONING: ADJUST BY TURNING TUBULAR TURNBUCKLE BODY.

HARDWARE PAIRINGS: USUALLY PAIRED WITH FIXED CAP END OR ANOTHER SLEEKLINE CAP END TURNBUCKLE. MAY ALSO USE ANY OTHER TENSION ADJUSTMENT FITTING OR FIXED END.

SUPPLIER: FEENEY ARCHITECTURAL PRODUCTS



SLEEKLINE CAP END TURNBUCKLE, STAINLESS STEEL

PART#	SWAGE TYPE	CABLE SIZE	END CAR DIA (CØ)	END CAP THICK (CT)	SHAFT LENGTH CLOSED (OPEN) (A)	SHAFT DIA (SØ)	BODY LENGTH (BL)	BODY DIA (BØ)	LENGTH CLOSED (OPEN) (L)	ATTACHMENT POST DRILL HOLE Ø
3300	MACHINE	1/8"	9/16"	5/16"	3-1/2" (5-1/8")	1/4"	4-3/4"	1/2"	8-1/4" (9-7/8")	5/16"
3302	MACHINE	3/16"	9/16"	5/16"	3-1/2" (5-1/8")	1/4"	4-3/4"	1/2"	8-1/4" (9-7/8")	5/16"
3305	CABLECRIMP	1/8"	9/16"	5/16"	3-1/2" (5-1/8")	1/4"	4-3/4"	1/2"	8-1/4" (9-7/8")	5/16"
3282	CABLECRIMP	3/16"	9/16"	5/16"	3-1/2" (5-1/8")	1/4"	4-3/4"	1/2"	8-1/4" (9-7/8")	5/16"

CableRail Reference Drawing:
SLEEKLINE CAP END TURNBUCKLE

THIS DRAWING IS THE PROPERTY OF FEENEY INC. ANY REPRODUCTION OF THIS DOCUMENT WITHOUT THE EXPRESSED WRITTEN CONSENT OF FEENEY INC. IS STRICTLY PROHIBITED.

DATE:	05/15/13
PAGE:	1 of 1
REV:	
BY:	DSY
CHK:	BWA

feeney
makes it easy
 2603 Union St., Oakland, CA 94607
 P: 800-888-2418 F: 510-893-9484
 www.feeneyinc.com