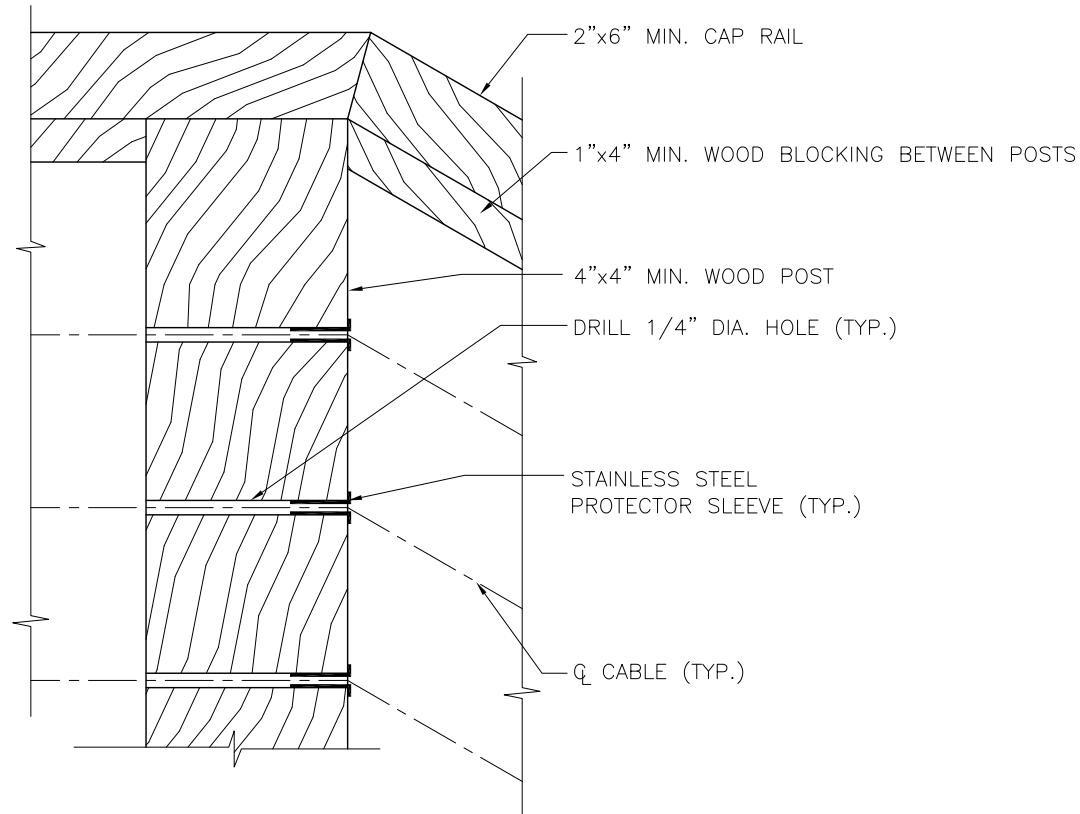


PROTECTOR SLEEVES: WOOD POST – STAIR TRANSITION

NOTE: DETAIL IS TYPICAL FOR BOTH 1/8" AND 3/16" DIAMETER STANDARD CABLERAIL™ ASSEMBLIES.



NOTE: INSERT PROTECTOR SLEEVES IN ALL HOLES WHERE CABLE ENTERS AT AN ANGLE TO PREVENT THE CABLE FROM CUTTING INTO THE WOOD. (I.E. STAIR TRANSITION POSTS OR OUTSIDE FACES OF DOUBLE CORNER POSTS)

CableRail Reference Drawing:

PROTECTOR SLEEVES AT STAIR TRANSITION IN WOOD POST

THIS DRAWING IS THE PROPERTY OF FEENEY INC. ANY REPRODUCTION OF THIS DOCUMENT WITHOUT THE EXPRESSED WRITTEN CONSENT OF FEENEY INC. IS STRICTLY PROHIBITED.

DATE:	05/15/13
PAGE:	1 of 1
REV:	
BY:	DSY
CHK:	BWA

feeney
makes it easy

2603 Union St., Oakland, CA 94607
P: 800-888-2418 F: 510-893-9484
www.feeneyinc.com