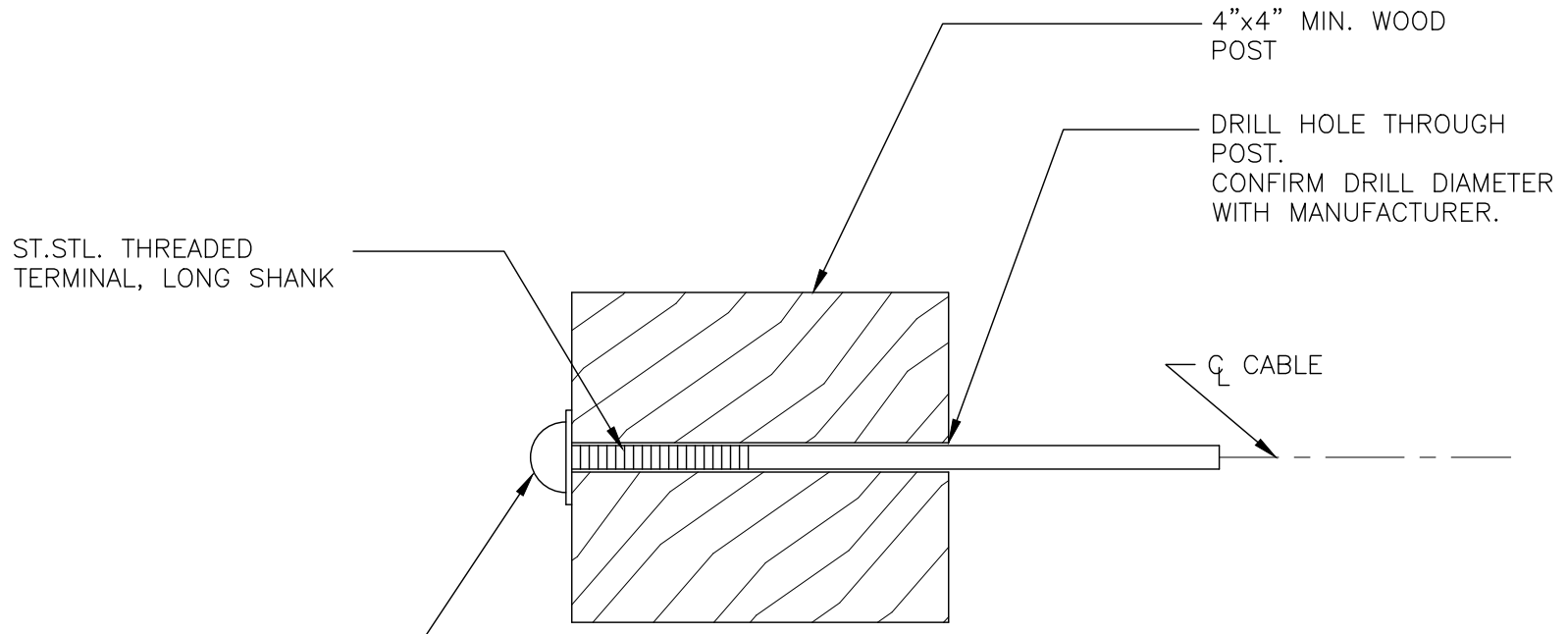


NOTE: DETAIL IS TYPICAL FOR BOTH 1/8" AND 3/16" DIAMETER STANDARD CABLERAIL™ ASSEMBLIES.



ST.STL. THREADED  
TERMINAL, LONG SHANK

4"x4" MIN. WOOD  
POST

DRILL HOLE THROUGH  
POST.  
CONFIRM DRILL DIAMETER  
WITH MANUFACTURER.

CABLE

END FITTINGS:  
END CAP, COLORED POLYETHYLENE (STANDARD) OR ST. STL. (OPTIONAL)  
ST. STL. SNUG-GRIP™ WASHER-NUT (COVERED)  
1" O.D. ST. STL. FLAT WASHER

CableRail Reference Drawing:  
**THREADED TERMINAL FITTING IN WOOD POST**

THIS DRAWING IS THE PROPERTY OF FEENEY INC. ANY REPRODUCTION OF THIS DOCUMENT WITHOUT THE EXPRESSED WRITTEN CONSENT OF FEENEY INC. IS STRICTLY PROHIBITED.

DATE:	03/31/17
PAGE:	1 of 1
REV:	B
BY:	MRJ
CHK:	BWA

**feeney**  
*makes it easy*

2603 Union St., Oakland, CA 94607  
P: 800-888-2418 F: 510-893-9484  
www.feeneyinc.com